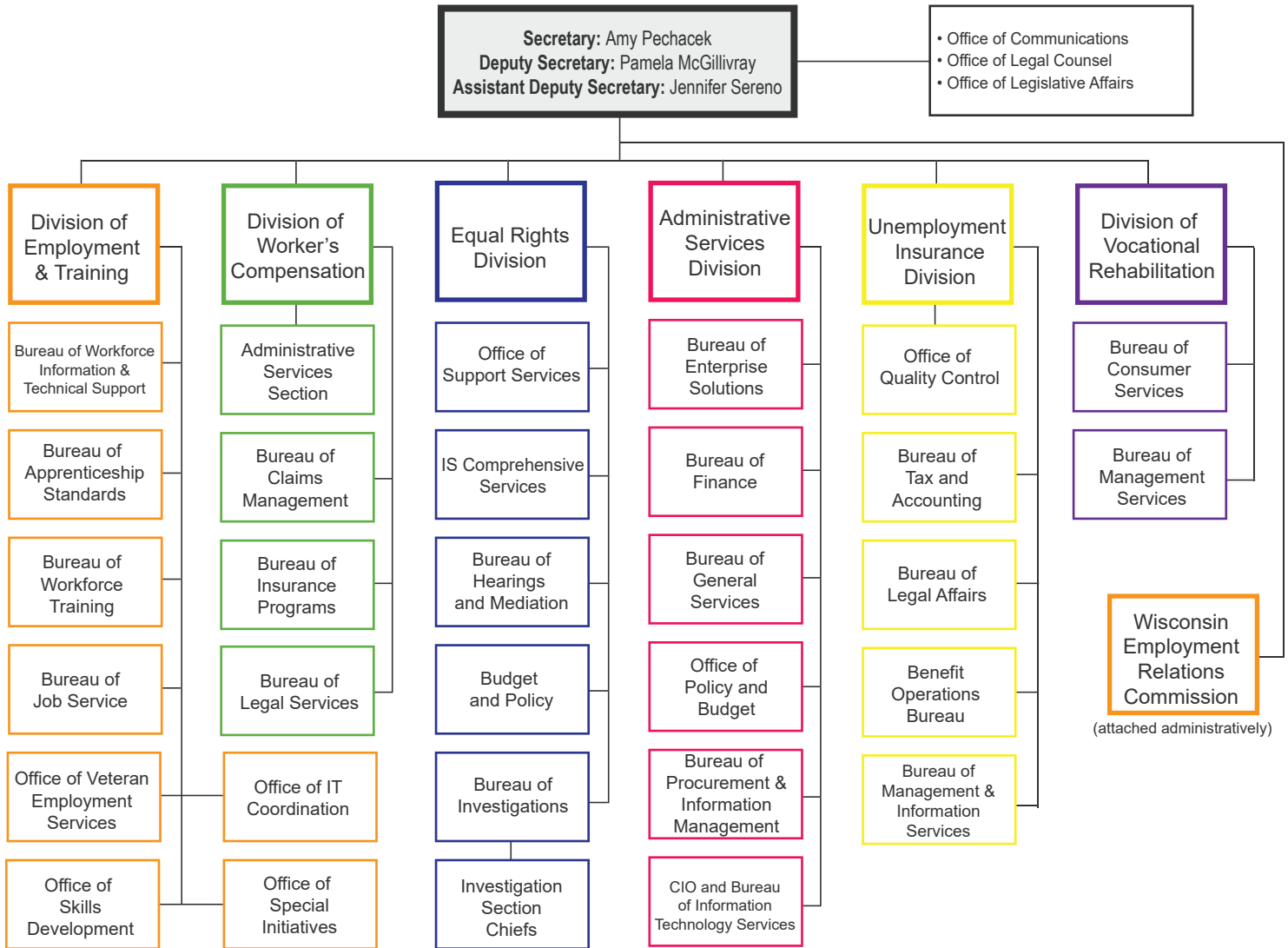




ORGANIZATION CHART





CONTACT US

● Office of the Secretary

Secretary: Amy Pechacek
Deputy Secretary: Pamela McGillivray
Assistant Deputy Secretary: Jennifer Sereno
Human Resource Services
Office of Communications
Office of Legal Counsel
Office of Legislative Affairs

sec@dwd.wisconsin.gov

● Administrative Services

Bureau of Enterprise Solutions
Bureau of Finance
Bureau of General Services
Bureau of Information Technology Services
Bureau of Procurement & Information Management
Office of Policy and Budget

asd@dwd.wisconsin.gov

● Employment & Training

Bureau of Apprenticeship Standards
Bureau of Job Service
Bureau of Workforce Information and Technical Support
Bureau of Workforce Training
Office of Skills Development
Office of Veteran Employment Services

detweb@dwd.wisconsin.gov

● Equal Rights

Bureau of Budget and Policy
Bureau of Hearings and Mediation
Bureau of Investigations

erinfo@dwd.wisconsin.gov

● Unemployment Insurance

Bureau of Benefit Operations
Bureau of Legal Affairs
Bureau of Management and Information Services
Bureau of Tax and Accounting

ui@dwd.wisconsin.gov

● Vocational Rehabilitation

Bureau of Consumer Services
Bureau of Management Services

dvr@dwd.wisconsin.gov

● Worker's Compensation

Bureau of Insurance Programs
Bureau of Legal Services
Bureau of Claims Management

wadmin@dwd.wisconsin.gov

● Wisconsin Employment Relations Commission

wercccommonmailbox@wisconsin.gov